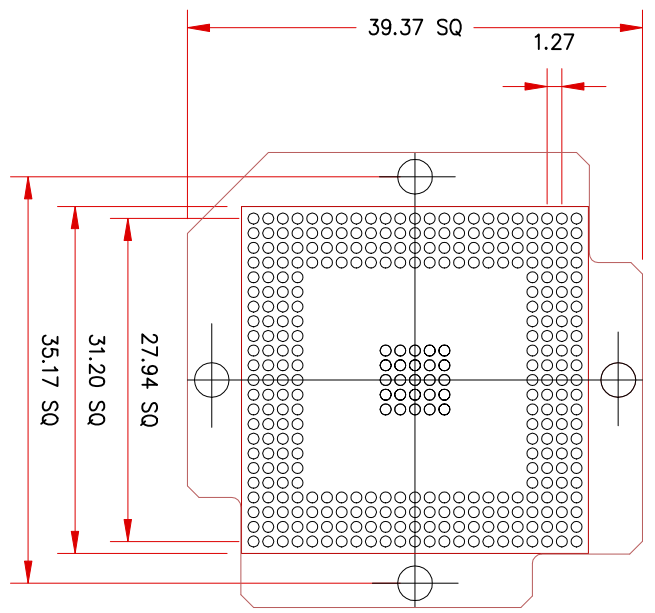
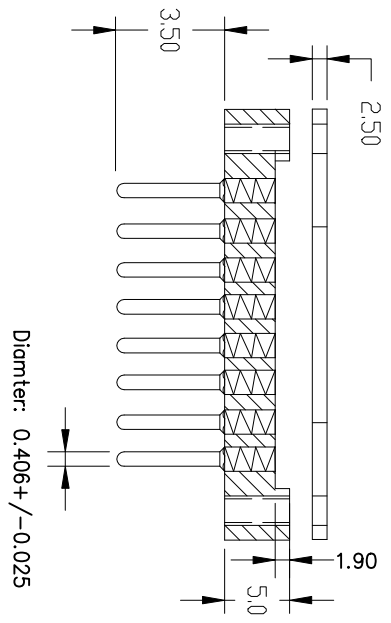


THE DRAWINGS AND INFORMATION CONTAINED HEREIN ARE THE EXCLUSIVE PROPERTY OF ACTEL CORPORATION AND ARE UNCLASSIFIED AND UNCONTROLLED INFORMATION. ANY REPRODUCTION OR TRANSMISSION OF THIS INFORMATION IN ANY FORM OR BY ANY MEANS, ELECTRONIC OR MECHANICAL, INCLUDING PHOTOCOPYING, RECORDING, OR BY ANY INFORMATION STORAGE AND RETRIEVAL SYSTEM, WITHOUT THE EXPRESS WRITTEN PERMISSION OF ACTEL.



NOTES: Dim: mm

1. PIN MATERIAL: BRASS ALLOY 360, 1/2 HARD.
2. PIN FINISH: 10 μ" GOLD OVER 50 μ" NICKEL.
3. INSULATOR MATERIAL: FR-4 GLASS EPOXY
4. Contact: BeCu with gold plated

ACTEL CONFIDENTIAL

| ECN NO. | REV. | DESCRIPTION OF CHANGE | EFFECTIVE DATE | ORIGINATOR |
|---------|------|-----------------------|----------------|------------|
| 990138  | 0    | Initial               | 4/30/99        | Roy Kiang  |

E-TEC PART#: BPW329-1270-23AB11  
E-TEC PATENTS PENDING

| UNLESS OTHERWISE SPECIFIED DIMENSIONS ARE IN MILLIMETERS |         | PRODUCTION         |                      | ACTEL CORP.<br>500 B ARDEN AVENUE<br>SUNNYVALE CA 94086 |                    |
|--|---------|--------------------|----------------------|---|--------------------|
| DECIMAL  | ANGULAR | APPROVALS          | DATE                 | TITLE   | ACTEL DWG. NUMBER  |
| XX ±0.10   | ±1°     | DRAWN<br>Roy Kiang | 4/27/99              | 329-31x31mm, 1.27mm E-TEC BGA SOCKET                    | 1-07-09037         |
| XXX ±0.05  |         | CHECKED            |                      | SIZE  | ACTEL DWG. NUMBER  |
| XXXX ±0.03   |         | RELEASED           |                      | B   | BPW329-1270-23AB11 |
| MATERIAL   | FINISH  | SEE NOTES          | DO NOT SCALE DRAWING | ACTEL Part#: SE-8329-A                                  | SCALE: NONE        |
|  |         |                    |                      |   | SHEET 1 OF 2       |